

## **SAFE-GUARDING CHILDREN - the Statement**

It is our aim to provide an atmosphere and structure that gives students happiness and security, enabling them to fulfil their potential. There are clearly laid down routines and regular opportunities to discuss their application. Staff make themselves available to students at all reasonable times and students are encouraged to exercise a responsible attitude to each other. The emphasis is on positive discipline and building constructive relations between staff and students, and between students of all ages.

We have a community of many races, religions, cultures and customs and actively encourage tolerance. Staff are aware of the pressures that such a community can present but believe the positive advantages far outweigh the possible problems.

The staff are always available to parents and guardians for personal visits or phone calls. They share a common concern for the student's welfare. Parents Evenings are organised for parents to meet staff.

From time to time students will go through stressful periods at school just as they do at home. They are actively encouraged to speak to any member of staff, and should be assured that sympathetic support will be given.

It is recognised that child abuse can be a problem for children from all backgrounds and that any child may be in need of protection. The School offers a support network of trained staff to receive and deal appropriately with any concern of the students.

### ***NAMED MEMBER OF STAFF:***

<b>Senior School</b>	I.C. GRAINGER	Head of Pastoral Care
<b>Junior School</b>	Mrs J.C. REX	Deputy Head (Junior School)

\* \* \* \* \*

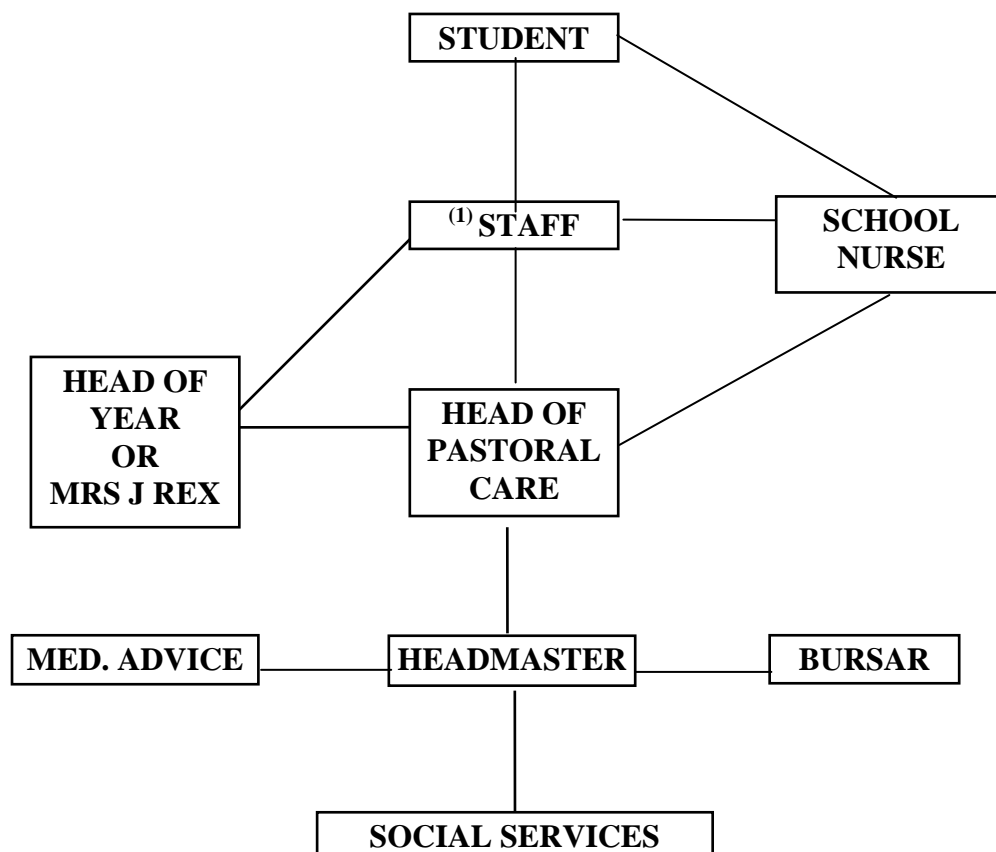
### **SCHOOL COUNSELLOR:**

Bedford Modern School has two independent, confidential counsellors. They visit twice a week but also as demand requires. All students are welcome to see a counsellor and appointments can be made via the School Nurse.

*(June 2009)*

# SAFE-GUARDING CHILDREN - the procedure

It is the first person to be contacted who initiates the procedure



## **N.B.**

(1) The member of staff will explain to the student that it may be necessary to discuss the matter with the Head of Year or Head of Pastoral Care, and/or School Nurse (as appropriate), in the first instance.

(2) Normally, the member of staff should consult the Head of Year (in the case of the Junior School, NRY or Mrs. J. Rex should be consulted)

**(3) The Bursar is involved in the procedure as an official of the School who is cognisant with the legal requirements of the Children's Act**

**(4) Medical advice will be sought when appropriate.**

\*\*\*\*\*

**If a member of staff is spoken to by a student about abuse, or has reason to believe that abuse has taken place, this is the procedure to adopt.**